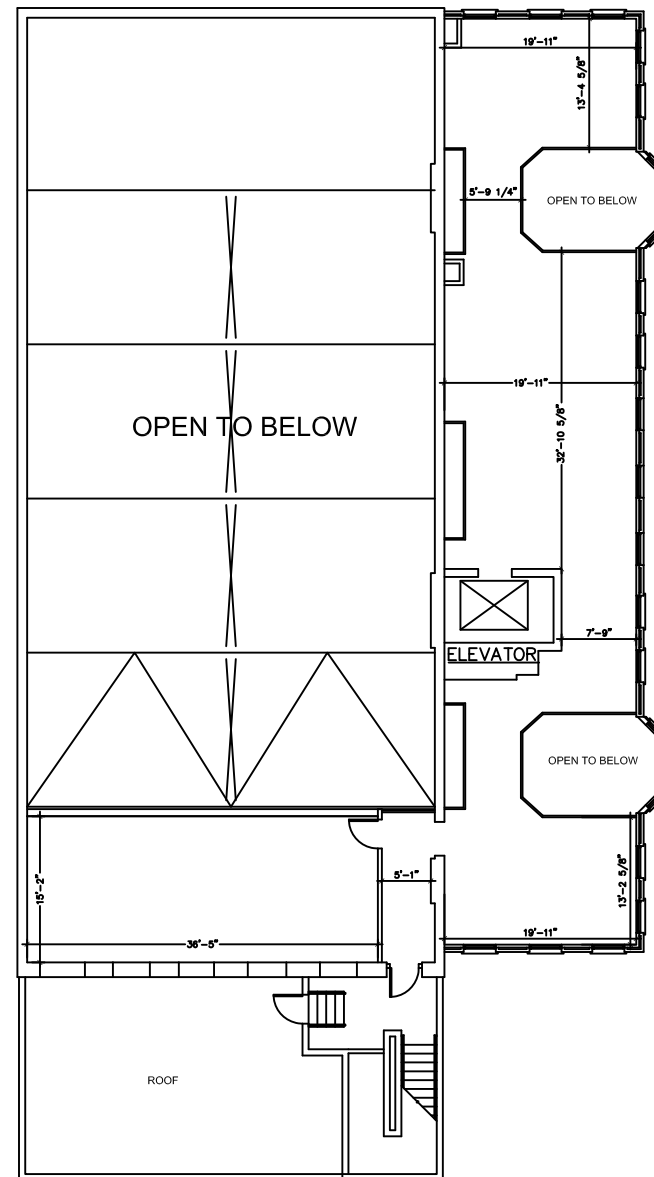
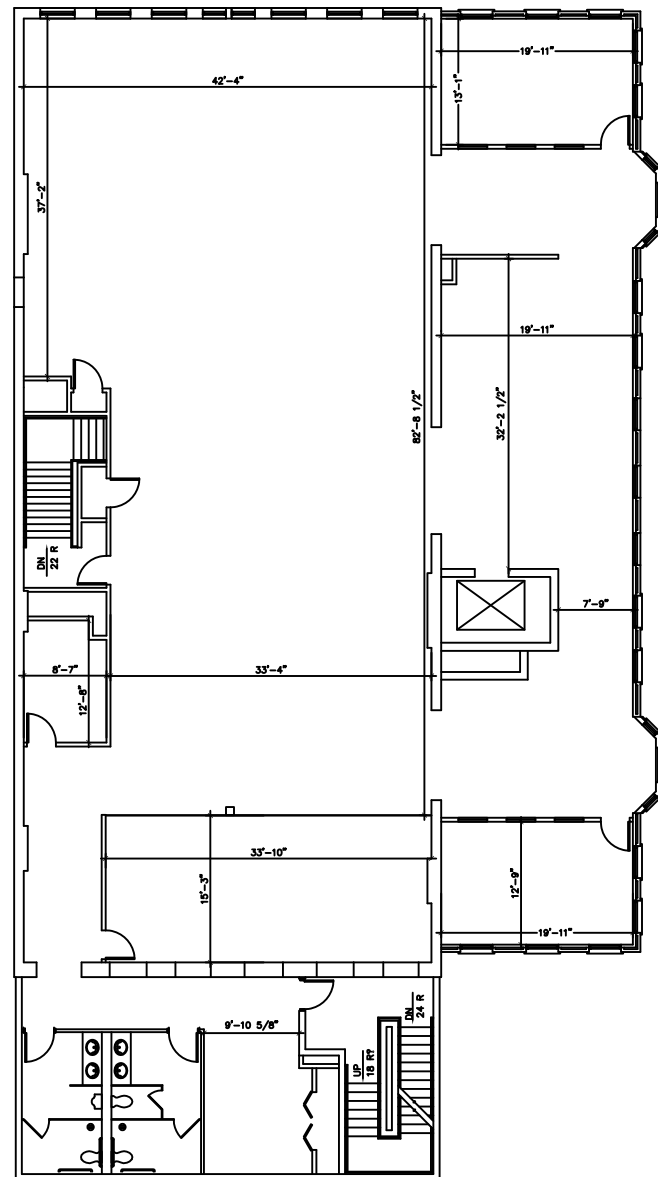




LEASING INFORMATION:
 PO Box 671
 Elgin, IL 60121
847-289-0800
 www.Kresmeryproperties.com



TENANT "400" FLOOR PLAN
 9,064 S.F.

SUITE FEATURES:

- NATURAL GAS SERVICE & METER
- 200 amp 120/208V 3PH
- GAS HEATING AND ELECTRIC COOLING IN OFFICE
- FULLY SPRINKLED

BUILDING FEATURES:

- MASONRY BEARING WALLS WITH BRICK VENEER FACADE
- STRUCTURAL STEEL FRAMING
- CMU DEMISING WALLS
- SEALED CONCRETE SLAB FLOORS
- INSULATED GLASS IN ALUMINUM FRAMES WITH THERMAL BREAK
- FIRE SPRINKLER SYSTEM
- FULL BUILDING FIRE ALARM SYSTEM
- DIRECT EXTERIOR ACCESS

SITE FEATURES:

- CITY WATER AND SEWER
- ASPHALT PAVED FRONT PARKING LOT WITH SIDEWALK
- HEAVY DUTY ASPHALT PAVED LOADING AREA
- INDIVIDUAL AND COMMON DEPRESSED LOADING DOCKS W/CONCRETE PAVEMENT AND APRONS
- STORM MANAGEMENT SYSTEM
- MAINTAINED LANDSCAPING

SUITE AREAS ARE CALCULATED BASED ON FIELD VERIFICATION - MARCH 2012 AND ARE MEASURED TO THE EXTERIOR FACE OF PERIMETER WALLS AND TO CENTER OF DEMISING WALLS

DATE : 7/23/2013

SCALE :

SUITE 400
 One Douglas Ave.
 Elgin, Illinois